

B+S | RACE CAR POP OUT
USED VEHICLE | #1545 | #1578

B+S | RACE CAR POP OUT

EXTERIOR

BISCHOFF SCHECK

Moving ideas.



B+S | RACE CAR POP OUT

EXTERIOR

BISCHOFF + SCHECK

Moving ideas.



B+S | RACE CAR POP OUT

EXTERIOR

BISCHOFF + SCHECK

Moving ideas.



B+S | RACE CAR POP OUT

EXTERIOR

BISCHOFF SCHECK

Moving ideas.



B+S | RACE CAR POP OUT

EXTERIOR

BISCHOFF SCHECK

Moving ideas.



B+S | RACE CAR POP OUT

EXTERIOR

BISCHOFF + SCHECK

Moving ideas.



B+S | RACE CAR POP OUT

OFFICE | MEETING

BISCHOFF SCHECK

Moving ideas.



B+S | RACE CAR POP OUT

OFFICE | MEETING

BISCHOFF SCHECK

Moving ideas.



B+S | RACE CAR POP OUT

OFFICE | MEETING

BISCHOFF SCHECK

Moving ideas.



B+S | RACE CAR POP OUT

OFFICE | MEETING

BISCHOFF SCHECK

Moving ideas.

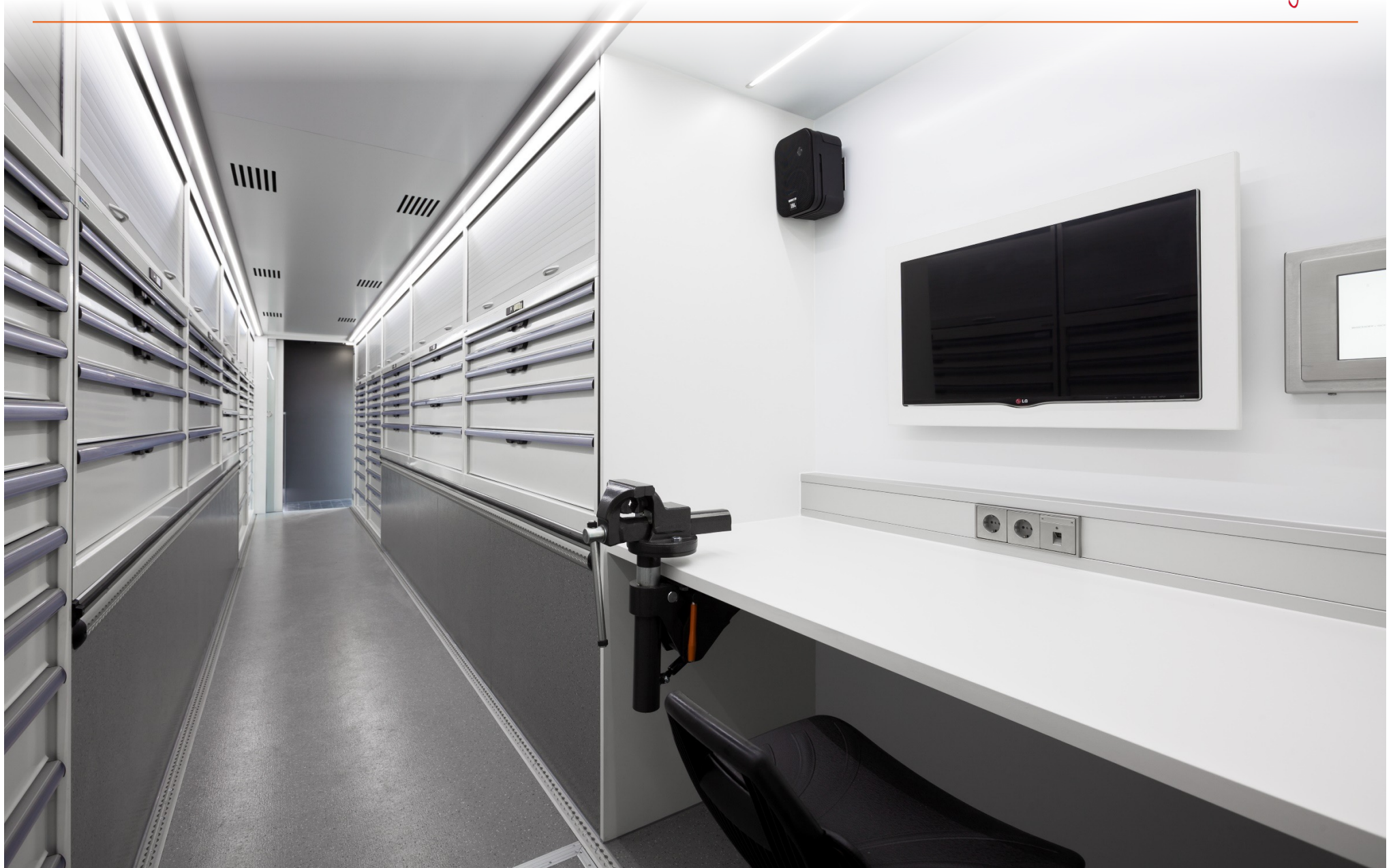


B+S | RACE CAR POP OUT

TRANSPORT AREA

BISCHOFF SCHECK

Moving ideas.

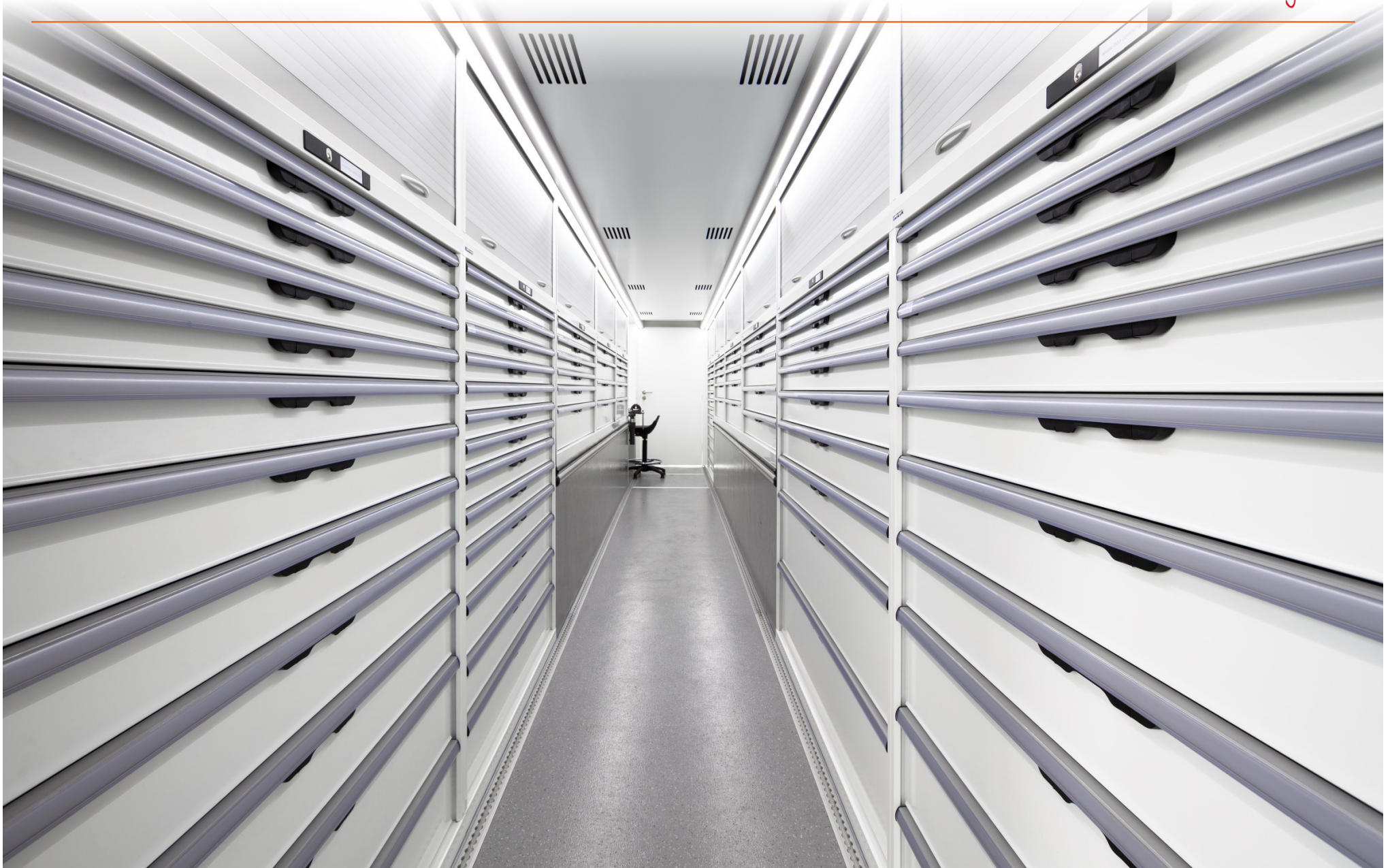


B+S | RACE CAR POP OUT

TRANSPORT AREA

BISCHOFF + SCHECK

Moving ideas.



B+S | RACE CAR POP OUT

TRANSPORT AREA

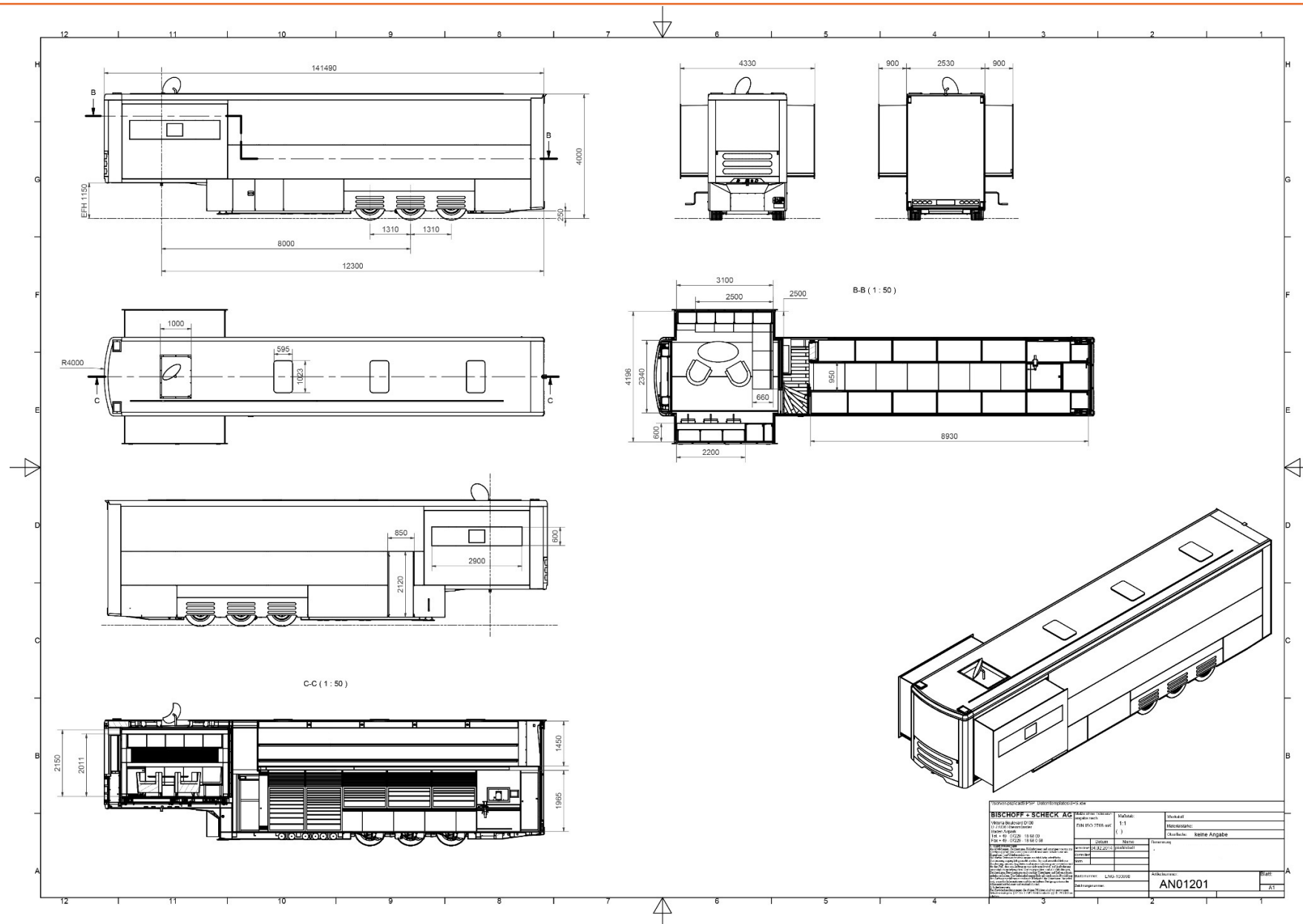
BISCHOFF + SCHECK

Moving ideas.



DRAWING

Moving ideas.



■ Technical details

Model	Race Car Pop Out #1545
Car Loading capacity:	2 cars

Chassis

Manufacturer:	Bischoff + Scheck
Year of construction:	2015
Total weight:	35.000 kg
King pin load:	10.000 kg
Permitted axle load:	27.000 kg
Axles:	3 x SAF
Tyres:	385/55 R 22,5
King pin height:	1.150 mm
Suspension:	Air
Brakes:	Disc Brakes
Support	Hydraulic Support Legs

Body construction

Material:	Aluminium
Length:	14.100 mm
Width:	2.550 mm
Height:	4.000 mm
Colour:	RAL 9036 MAN Platinmetallic
Transport area first floor:	9.800/2.400
Transport area ground floor:	Parts Storage
Transport area height first floor:	1.460 mm
Transport area height total:	2.050 mm

Tail lift

Manufacturer:	Bischoff & Scheck
Tail lift platform:	3.500 mm
Tail lift capacity:	2.500 kg

■ Storage rooms

Swan neck:	No
Underfloor:	No
Front wall:	Yes
Axle arrangement:	No

■ Office

Pop Out:	Yes
Lounge seats:	5 to 6
Workplaces:	3 to 4
Kitchen:	Coffee Bar
Colour Spec:	Coffee Brown

■ Media technologie

SAT system:	Yes
Screen:	Yes
Touch Control	Yes

■ Onboard equipment

Control:	Yes
Water supply:	No
Compressed air supply:	No
Generator:	No
Air conditioning:	Yes
Ventilation system:	No
Media System	Yes
Flagpole 2x:	Yes

■ Options

Tent:	Optional
-------	----------

VICTORIA BOULEVARD D100
D - 77836 RHEINMÜNSTER

FON +49 (0) 72 29 - 18 680 0
FAX +49 (0) 72 29 - 18 680 68
WWW.BISCHOFF-SCHECK.DE